



S/Mime Tool User Guide

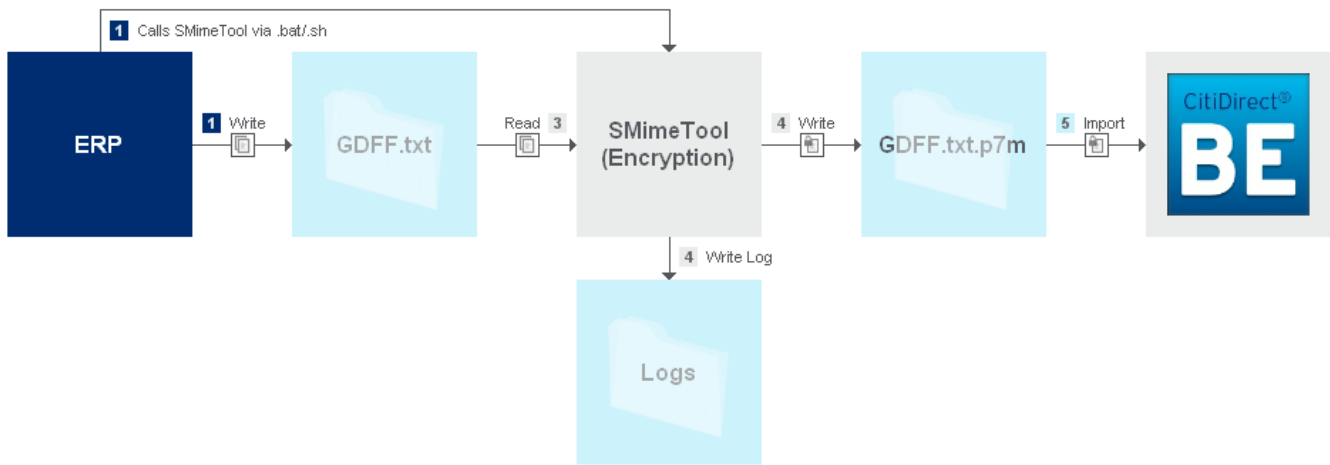
2013



Table of Contents

1. System Flow.....	3
2. Encryption Tool Settings	3
Encrypt.ini.....	3
3. Setting up the Encryption Tool	3
File Copy	3
Classpath	4

System Flow



Encryption Tool Settings

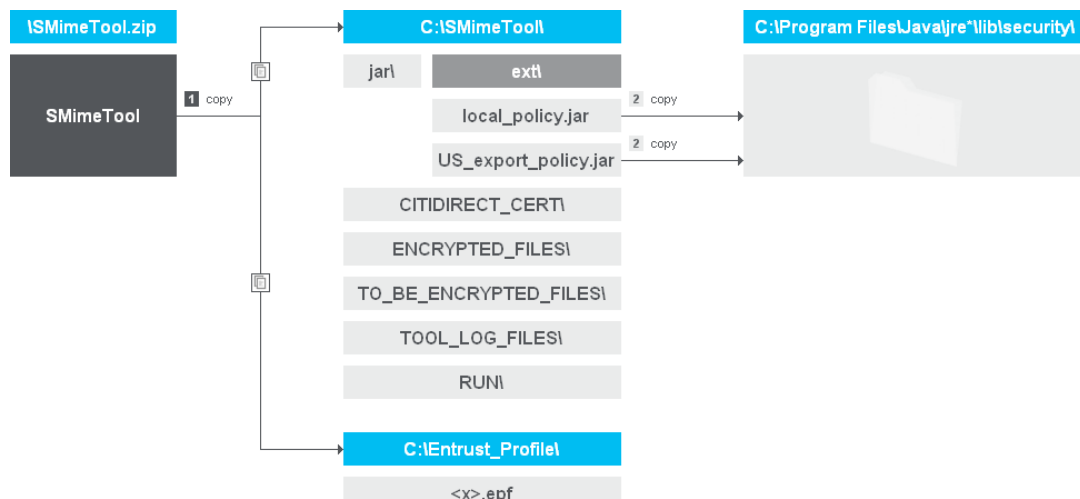
Encrypt.ini

Setting	Type	Default Value	Purpose
profile	string	C:/Entrust_Profile/XXX.epf	Location of .epf
pass	string	XXXX	Hashed password
hash	string	XXXX	Hash code
InBoundFolder	string	C:/SMimeTool/TO_BE_ENCRYPTED_FILES	Where input files are
OutBoundFolder	string	C:/CitiDirect/	Where output files go
RcptCert	string	C:/SMimeTool/CITIDIRECT_CERT/citidirectkey.cer	Where the Citi Certificate is
LogPath	string	C:/SMimeTool/TOOL_LOG_FILES/	Where to put log info
Encrypt	string	true	Encrypt the file

Setting up the Encryption Tool

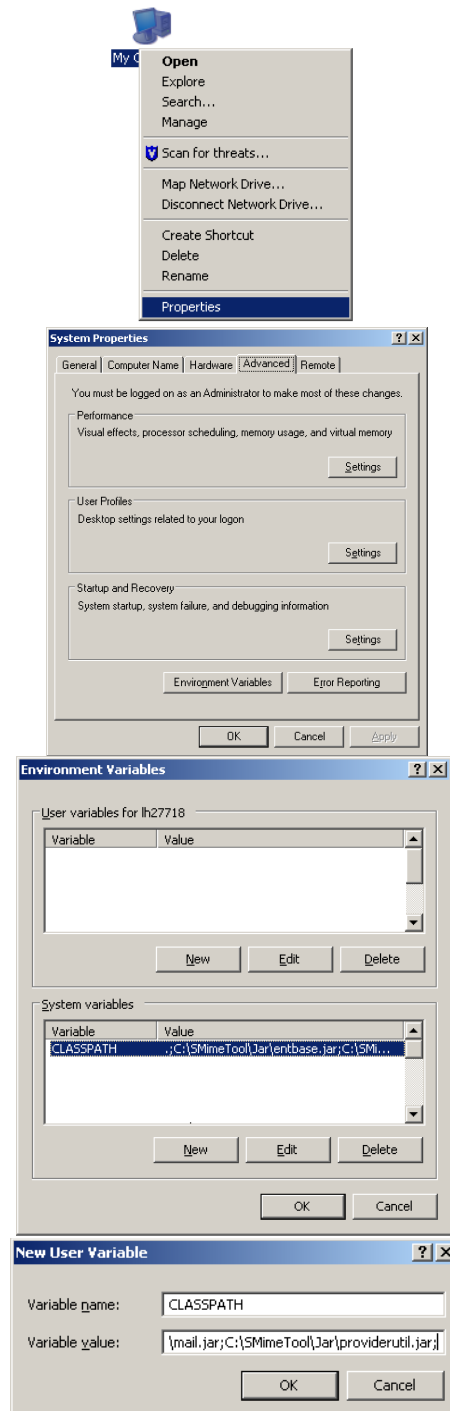
File Copy

1. Copy files
2. Copy .jar Files



Classpath

1. Classpath to Environment Variables (requires Admin Access)
2. Right Click **My Computer** → **Properties** → **Environment Variables** → **New** → **Paste** → **Ok**



Classpath Value

C:\SMimeTool\Jar\entbase.jar;C:\SMimeTool\Jar\entcertlist.jar;C:\SMimeTool\Jar\entcms.jar;C:\SMimeTool\Jar\entjsse.jar;C:\SMimeTool\Jar\entp12.jar;C:\SMimeTool\Jar\entp7.jar;C:\SMimeTool\Jar\entsmime.jar;C:\SMimeTool\Jar\entsmimev3.jar;C:\SMimeTool\Jar\enttunnel.jar;C:\SMimeTool\Jar\entuser.jar;C:\SMimeTool\Jar\entp5.jar;C:\SMimeTool\Jar\activation.jar;C:\SMimeTool\Jar\mail.jar;C:\SMimeTool\Jar\providerutil.jar;